



THINSTALL™ SWING ARM ACCESSORIES

TA100 THINSTALL
Component Shelf

- Compatible with Large and Medium THINSTALL Swing Arms
- Shelf sits above or below TV to hold any AV Component
- Height adjustable to accommodate different component and TV sizes
- Adds 0.25" (6 mm) of depth to installation



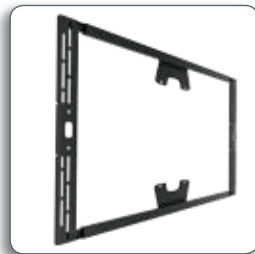
TA200/TA250 THINSTALL
Camera Shelves

- 8" or 12" (203 mm or 305 mm) wide shelf
- Compatible with Large and Medium THINSTALL Swing Arms
- Shelf sits above or below TV
- Height adjustable to accommodate different camera and TV sizes
- Adds 0.25" (6 mm) of depth to installation



TA300 THINSTALL Left/Right
Speaker Adapter

- Compatible with Large and Medium THINSTALL Swing Arms
- Infinitely adjustable to fit speakers flush with side of TV
- Adds 0.13" (3 mm) of depth to installation



TA350 THINSTALL Center
Channel Speaker Adapter

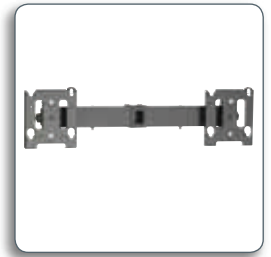
- Compatible with Large and Medium THINSTALL Swing Arms
- Infinitely adjustable to fit speaker flush with bottom of TV
- Adds 0.25" (6 mm) of depth to installation



CART & STAND ACCESSORIES

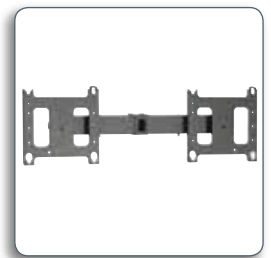
MAC722 Dual Side-by-Side
Accessory

- Adds support for 2 displays side-by-side to carts and floor stands
- Supports (2) 38" - 58" (96.5 - 147.3 cm) wide displays (must be same size)
- Weight Capacity: 125 lbs (56.7 kg) total



PAC722 Dual Side-by-Side
Accessory

- Adds support for 2 displays side-by-side to carts and floor stands
- Supports (2) 38" - 58" (96.5 - 147.3 cm) wide displays (must be same size)
- Weight Capacity: 150 lbs (68 kg) total



MAC720 Dual Vertical Display
Accessory

- Adds support for a second display to the lower extension column
- Weight Capacity: 125 lbs (56.7 kg)



PAC720 Dual Vertical Display
Accessory

- Adds support for a second display to the lower extension column
- Weight Capacity: 200 lbs (90.7 kg)



MAC790 Display
Swivel Adapter

- Adds swivel capability to carts and floor stands
- Tilt: ± 15°
- Swivel: ± 15°
- Weight Capacity: 125 lbs (56.7 kg)

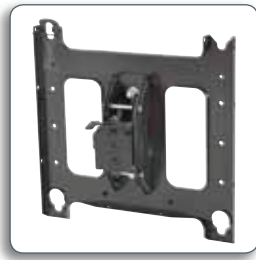




CART & STAND ACCESSORIES cont.

PAC790 Display Swivel Adapter

- Adds swivel capability to carts and floor stands
- Tilt: $\pm 15^\circ$
- Swivel: $\pm 15^\circ$
- Weight Capacity: 200 lbs (90.7 kg)



PAC715/PAC716 Video Conference Camera Shelf - Above

- 9" or 14" (229 mm or 356 mm) wide camera shelf
- Supports a video conferencing camera above or below the display
- Front/Back Extension: 2.5" (64 mm)
- Vertical Extension: 6.75" (171 mm)
- Weight Capacity: 10 lbs (4.5 kg)



PAC710 Carts and Stands Accessory Shelf

- Supports Chief's line of flat panel floor stands and carts
- Quick installation and adjustments
- Weight Capacity: 25 lbs (11.34 kg)



PAC717 Literature Shelf

- Presents literature in upright position - great for rental / staging applications
- Max Literature Size: (HxWxD) 11" x 8.5" x 2" (279 x 216 x 51 mm)
- Weight Capacity: 25 lbs (11.3 kg)



PAC730A/B/C Secure Storage Shelf

- Perfect size for secure storage of DVD players, laptops, and other similar sized equipment
- Up to 3 units can be stacked vertically and bolted together
- Three keyed locking options (A/B/C)
- Max equipment size: (HxWxD) 3.5" x 17.5" x 12.0" (89 x 445 x 305 mm)
- Weight Capacity: 25 lbs (11.3 kg)



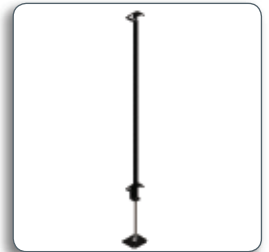
PAC735A/B/C Secure Storage Cabinet

- Secure storage option for rack mount equipment, PCs, codecs, and other large AV equipment
- Supports 19" (483 mm) wide rack mount equipment (up to 4 RU)
- Up to 3 units can be stacked vertically and bolted together (starting at base of cart/stand)
- Max equipment size: (HxWxD) 9" x 19" x 19" (229 x 483 x 483 mm)
- Weight Capacity: 40 lbs (18.1 kg)



PAC780/782/784 Height Assist Accessory

- Helps to neutralize the weight of displays for easier height adjustment
- Can be added to the MFC/PFC/MF1/PF1 carts and stands
- Travel distance: up to 32" (813 mm)
- PAC780 Weight Capacity: 50-75 lbs (22.7-34 kg)
- PAC782 Weight Capacity: 75-100 lbs (34-45.4 kg)
- PAC780 Weight Capacity: 100-125 lbs (45.4-56.7 kg)



PAC775 Cart Outdoor Casters

- Helps to reduce vibration transitted to equipment
- Weight Capacity: 200 lbs (90.7 kg)

